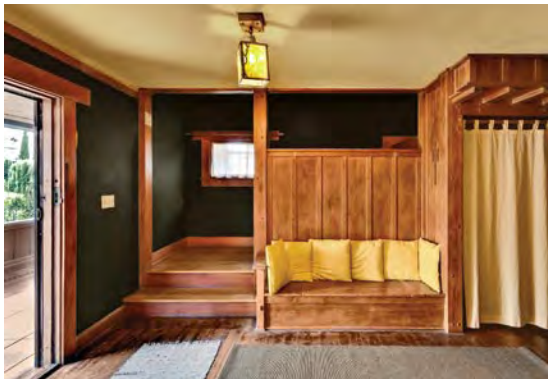


Rare Greene & Greene



Lucy E. Wheeler House, c. 1905, Historic West Adams

2175 Cambridge Street, Los Angeles

4 bedrooms 2.5 baths 2 stories 2,620 square feet 6,011 square foot lot

Rare opportunity to purchase the only remaining Craftsman home within Los Angeles' city boundaries documented as designed by the famed Arts & Crafts architects Henry Mather Greene and Charles Sumner Greene. The Lucy E. Wheeler House was designed on this corner lot for a businesswoman in 1905. Most details are remarkably intact, including four original leaded glass lantern light fixtures in the living room, dining room, entry, and sunroom. Other interior elements include the period early kitchen and pantry. The main rooms have been recently restored to original colors and appearance; more restoration work is needed in other areas. Systems have been upgraded during the 25-year ownership by noted restoration architect Martin Eli Weil. Located in the Harvard Heights Historic Preservation Overlay Zone (HPOZ), this property is further protected by a comprehensive interior and exterior easement monitored by the Los Angeles Conservancy. City Historic Cultural Monument status is pending. Property may qualify for Mills Act Historical Property tax benefits.



Asking price \$649,000

DAVID RAPOSA Broker, Lic# 00905218

323-573-4202 cell / 323-734-2001 davidr@citylivingrealty.com

Our offices are in the Victorian Village • 2316 1/2 Union Avenue Suite 2 • Los Angeles, CA 90007 • 213-747-1337